



Intuitive and user-friendly Mediation Layer Appliance

Overview

Designed for more efficient control of today's required tapped or SPAN-based data sources during capturing of network data.

An "All in One GUI" represents a shortcut by simplifying the procedures in setting up individual recording tasks. The enhanced features enable prefiltered datastream for recording. Together with SIRIUS, this delivers highly efficient recording function.



Key Features

Intuitive and user-friendly Web GUI

Each assigned physical ports and logical flows in a switch is shown graphically and between each ports can be connected by drag and drop.

In addition, assign or removed of port can be done with just a few mouse clicks.

At the pop-up menu, user can set up and specify more detailed ports and flows by selecting each object. Each set-up field consists of short description fields, and most of them have parameters selection formula which can be easily chosen by the user.



The GUI only show the minimum necessary content for the Packet Broker functions and is a simplified and sophisticated design. The configuration and the option setting is abundant and allow a flexible setup upon request for various monitoring applications and appliances.

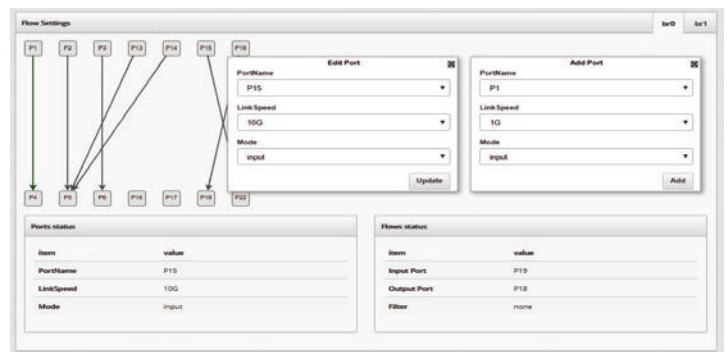
Advanced packet filter

The SwiftWing Mediation Appliance has packet filter function that removes unnecessary packets or only transfer specific packets. This support standard network protocols (EthernetFrame, VLAN, IPv4, ARP, TCP, UDP). Also, each protocol fields (such as network address of IPv4, MAC address of Ethernet, port number of TCP) is supported with specified range value filter by mask.

In addition to filters, VLANs can be added or removed as action.

Detailed real-time reports

Information of the physical ports and logical flows is provided by graphs and tables in detail and real-time to user. The state graph is updated at regular time intervals and the states be confirmed in real-time. Also, the user can pause the state graph to examine specific port of the graph.



Summary

- ▶ Intuitive and user-friendly Web GUI
- ▶ Simple and sophisticated design
- ▶ Support aggregations
- ▶ Advanced packet filter
- ▶ Support standard protocols and range filter
- ▶ Detailed and real-time reports
- ▶ Provide reports by graphs and tables

Available Models

There are currently three (3) different models, each of them mounts different interfaces:

	SW4610	SW5812X	SW5812T
48-Port Base Unit	10/100/1000 BASE-T	1/10 GbE(SFP/SFP+)	100M/1G/10G BASE-T
Uplink Options	4 x 1/10 GbE(SFP/SFP+)	4 x 40 GbE (QSFP+)	6 x 40 GbE (QSFP+)
SFP+/QSFP+ Options	SR, LR, LRM, CR4	LRM, SR, LR / CR4, SR4, LR4	
Console Ports	1 x RJ-45 + Serial		
Management Ports	1 x 10/100/1000 BASE-T		

For inquiries & ordering information



ComWorth Co., Ltd.
 (Japan - Headquarter)
 2-35-7, Nishi magome, Ohta-ku
 Tokyo, 143-0026
 Japan
 TEL: +81 3 3777 0888
 FAX: +81 3 3772 8497
 URL: www.comworth.co.jp
 MAIL: info2@comworth.co.jp

ComWorth Solutions Pte. Ltd.
 (Singapore - APAC)
 10 Ubi Crescent #05-36
 Ubi Techpark (Lobby C)
 Singapore 408564
 TEL: +65 6748 2260
 FAX: +65 6748 2267
 URL: www.comworth.co.sg
 MAIL: info@comworth.com.sg

ComWorth Europe GmbH
 (Germany - Europe)
 Gutenbergstrasse 5
 D-65830 Kriftel
 Germany
 TEL: +49 (0) 6192 922 422 7
 FAX: +49 (0) 6192 922 422 8
 URL: www.comworth.eu
 MAIL: contact@comworth.eu