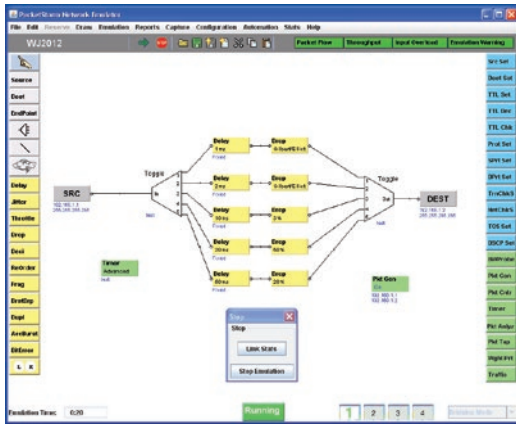


# IP Network Emulator

## Providing the Internet in a Box



The PacketStorm IP Network Emulators reproduce the unfavorable conditions of IP Networks and WANs in a controllable and repeatable lab setting.

The emulator recreates the dynamic behavior of the Internet such that any network model can be reproduced including those models that change with traffic, time or the behavior of another traffic flow.

### Features Overview

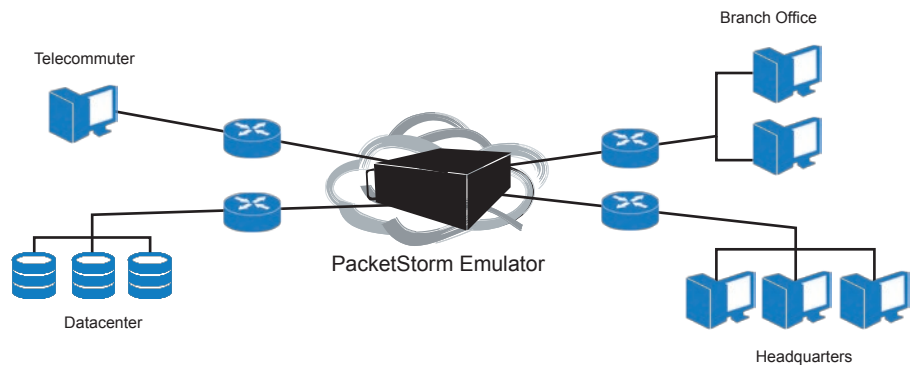
Supports a wide range of interfaces such as 10/100/1000 Ethernet, 10G Ethernet, T1 / E1, DS3, OC-3c, OC-12c and more...

Emulate dynamic time-varying network conditions by utilizing packet timer and/or packet counter triggers.

Supports data capture and replay to analyse, evaluate and emulate an IP network.

Supports IP Media applications emulation and impairments such as Accumulate and Burst, R-factor, MOS, Delayed factor, Media Loss Ratio statistics and MPEG-2 filtering.

Supports various routing modes such as IP routing, bridging, interface mapping and able to route packets between different interface types (Ethernet, ATM AL5, DS3, E1)



Packet Impairments	Packet Modifiers	Packet Filters	Network Interfaces
<ul style="list-style-type: none"> <li>- Delay</li> <li>- Jitter</li> <li>- Drop</li> <li>- Decimate</li> <li>- Duplicate</li> <li>- Re-order</li> <li>- Throttle</li> <li>- Fragment</li> <li>- MTU</li> <li>- Burst Drop</li> <li>- Sink</li> <li>- Accumulate &amp; Burst</li> <li>- Bit Error</li> <li>- MOS</li> <li>- Frame Relay</li> <li>- Insert Data</li> <li>- Delete Data</li> </ul>	<ul style="list-style-type: none"> <li>- Source Address</li> <li>- Destination Address</li> <li>- ToS</li> <li>- DSCP</li> <li>- TTL (Set)</li> <li>- TTL (Decrement)</li> <li>- TTL (Check)</li> <li>- Protocol</li> <li>- Transport Checksum</li> <li>- Network Checksum</li> <li>- Source Port</li> <li>- Destination Port</li> <li>- Fragment (Yes)</li> <li>- Fragment (No)</li> <li>- MPLS</li> <li>- VLAN</li> <li>- MAC Address</li> <li>- Universal</li> <li>- IPv6</li> <li>- Pseudo Wire Ethernet</li> <li>- RTP</li> <li>- MPEG-2</li> <li>- MPEG-2 PCR</li> </ul>	<ul style="list-style-type: none"> <li>- Source Address</li> <li>- Destination Address</li> <li>- Source Port</li> <li>- Destination Port</li> <li>- Protocol</li> <li>- ToS</li> <li>- Diff Serv</li> <li>- DSCP</li> <li>- MPLS</li> <li>- VLAN</li> <li>- Bit Pattern</li> <li>- MAC Address</li> <li>- Universal</li> <li>- PPPoE</li> <li>- MPEG-2</li> </ul>	<ul style="list-style-type: none"> <li>- 10G Ethernet</li> <li>- 10/100/1000</li> <li>- Gigabit Ethernet</li> <li>- v.35</li> <li>- HSSI</li> <li>- T1 / E1</li> <li>- DS3</li> <li>- X.21</li> <li>- OC-3</li> <li>- OC-12</li> <li>- RS-232</li> <li>- EIA 530A</li> <li>- EIA 449</li> </ul>
			<b>Statistics</b>
			<ul style="list-style-type: none"> <li>- Bandwidth</li> <li>- Delay</li> <li>- Loss</li> <li>- R-factor</li> <li>- MOS</li> <li>- Delayed Factor</li> <li>- Media Loss Rate</li> <li>- Bytes</li> <li>- Packets</li> </ul>



## Systems Overview

### PacketStorm 4XG

4-ports Gigabit Ethernet, or 2-ports 10 Gigabit Ethernet

### PacketStorm 6XG

(Emulator and Replicator / Modifier)

2 ports 10 GbE

### PacketStorm Hurricane III

Superior performance, five interface slots, interfaces up to 10Gbps

### PacketStorm Hurricane II

Superior performance, five interface slots, interfaces up to 1Gbps

### PacketStorm Hurricane

Advance performance, five interface slots, interfaces up to 1Gbps

### PacketStorm 8400E

Advance performance, four 10/100/1000 ports

### PacketStorm 2600E

High bandwidth applications, five interface slots, interfaces up to 1Gbps

### PacketStorm 1800E

Network edge applications, five interface slots, interfaces up to 155Mbps

### PacketStorm 900E

Two or four 10/100 ports, or two 10/100/1000 ports

### PacketStorm 400E

Two or four 10/100/1000 ports, or two or six ports Gigabit Ethernet SFP ports

### PacketStorm 200E

Two 10/100/1000 ports

## For inquiries and ordering information

### ComWorth Solutions Pte. Ltd.

(Singapore)

TEL : +65-6748-2260

FAX : +65-6748-2267

E-MAIL : info@comworth.com.sg

URL : http://www.comworth.com.sg

## Dynamic Emulation

The PacketStorm Emulator provides time-varying network conditions by utilizing packet timer and / or packet counter triggers. Each packet stream can have many different impairment event profiles for maximum emulation flexibility. In addition, impairment and modifiers values can be changed “on-the-fly” during emulation.

## Advance Filtering

Advance filters can address specific applications such as PPPoE, RTP, or MPEG-2. In addition, Bit Pattern and Universal Filters provides the capability to filter on any field anywhere in the packet. Multiple packets can be combined to create a filter.

## Layer 2 to 7 Applications

The PacketStorm emulator impairs packets from Layer 2 to Layer 7 applications. Layer 2 applications includes ARPs and proprietary packets. Higher layer applications include Pseudo Wire Ethernet, RTP, MPEG-2, and PPPoE. In addition, the Universal Filter and Modifier can be used for any application.

## Network Capture and Replay

The Network Capture and Replay provides the capability to analyze, evaluate, and emulate an IP network. The Network Capture reports the delays and packet-lost percentages between the source node and destination node. Network Replay duplicates the time varying network conditions that affect the delays and packet-lost percentages of the network. Captured values can be replayed on a packet by packet basis or a fixed time interval basis.

## TIA-921 & ITU G.1050 Emulation

- TIA-921 Standard
- ITU G.1050 Recommendations
- Custom Test Suites
- Tcl Automation
- Integration with 3rd party test systems

The TIA-921 Standard and ITU G.1050 recommendations specify an IP network model that consists of impairment combinations that are scenario based, time varying IP network impairments that provide a significant sample of impairment conditions. IP streams from any type of network device can be evaluated using this model.

## Broadcasting

Multiple Interface Steering steers packets to specified interface ports. A filter that includes the “steering active” destination steers packets to specified ports. Interface steering overrides all routing modes (bridging, interface mapping, routing). Therefore, it is possible to broadcast packets to a number of ports.

## System Security and Admin

The PacketStorm Emulator supports multiple accounts. Admin person grants different administrative permission to users. Permissions include system upgrade, remote GUI access, file transfer upload, and file download. System Security and Admin is included in the Multiple User Interface option.

