



Collis Test Tools

Collis Terminal Simulator

Who is it for?

Collis Terminal Simulator is the most complete terminal simulation tool for Issuers, Acquirers, Card Vendors and anyone else that wants to analyze payment transactions done using real payment cards or mobile payment applications through simulation of a payment terminal.

Why do you need it?

The Collis Terminal Simulator allows checking the complete payment transaction from cards issued or mobile payment applications to an issuing host.

The tool simulates the real behavior of a contact or contactless Point-of-Interaction (PoI) without the need for a real payment terminal. The Collis Terminal Simulator can be used for:

- Testing payment applications on contact cards, contactless cards and mobile phones
- Testing the combination of payment products and issuer host systems
- Speeding up terminal development when used as reference terminal

What is inside?

The Collis Terminal Simulator can be configured according to your preferred terminal profile settings. The terminal simulator can act as a:

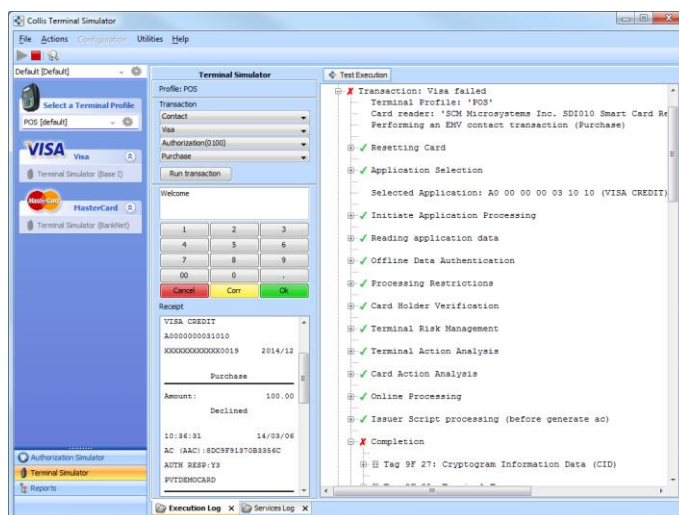
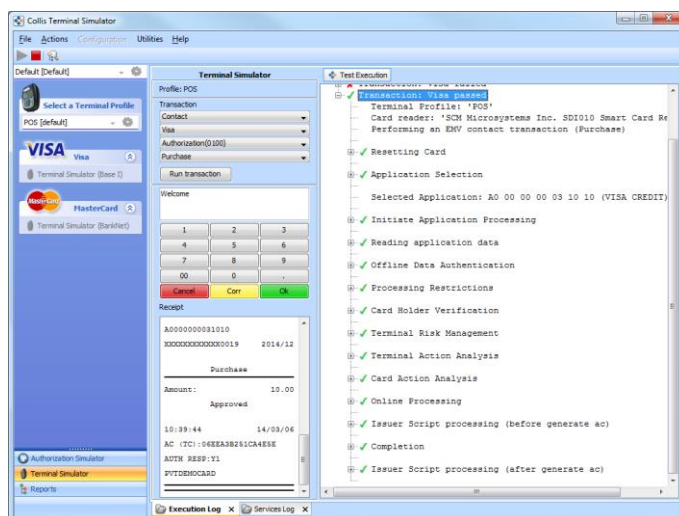
- Contact terminal
- Contactless terminal
- Automated Teller Machine (ATM)

The tool allows you to configure the simulated terminal with your selection of EMV terminal parameters, such as for:

- Application Selection
- Processing Restrictions
- Terminal Risk Management
- Terminal Action Analysis
- Online Processing
- Issuer Script Processing

You can set up the Collis Terminal Simulator as a separate terminal and connect to an Authorization Host, or switch on the in-built Authorization Simulator to simulate a complete payment transaction processing infrastructure.

A detailed and clear report of any testing is generated by Collis Terminal Simulator. All technical data in commands and responses are logged and interpreted.



Key benefits

- Ideal for migration towards EMV, Contactless Chip and Mobile Payments (NFC)
- No range of different physical terminals necessary
- Automatic analysis of messages and issues
- In-depth interpretation of ISO messages, including all EMV details
- Convenient utilities for parsing and interpreting EMV data and ISO 8583 messages
- Flexible and clear configuration

Collis Terminal Simulator

Specifications

Terminal Simulator features:

- Store configuration definition as Terminal Profiles
- Supports contact transactions (EMV)
- Supports contactless transactions
 - Visa payWave
 - Visa MSD, qVSDC
 - MasterCard *PayPass* (magstripe and M/Chip)
 - NFC (Mobile)
- Supports magnetic stripe transactions (MagStripe reader required to read card data)
- Configurable for POS and ATM modes
- Fully configurable terminal parameters including Terminal Action Codes, Floor Limit, CA Keys, Contactless CVM Limit, and many others
- Configurable for various country codes, currencies and terminal attributes
- Transactions supported:
 - Purchase
 - Withdrawal
 - Balance Inquiry
 - PIN Change

Protocols supported:

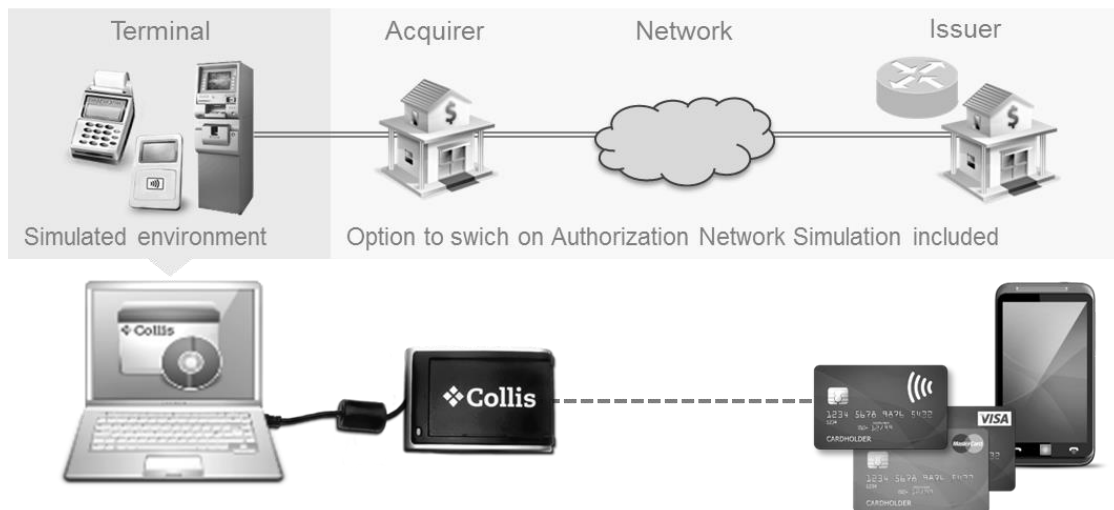
- BankNet for MasterCard transactions,
- VisaNet for Visa transactions
- Domestic Terminal to Host protocols (for detailed information, please contact us at info@ul-ts.com)

Hardware needed

- Collis SCM Reader (contact and contactless)

Integration with real PIN pad

- Verifone PIN pad
- XPI application interface



Technical Support

To ensure that you can effectively use the tool and gain the maximum benefits, UL offers for tools a Service Contract that gives you access to our Technical Support services. Our experienced technical team is available to provide support, advice and guidance.

The following services are covered

- New releases
- Helpdesk support
- Bug fixes
- Instant hardware replacement

You can access these services through the MyCollis service site at www.mycollis.com.

Collis and Aspects test tools are developed by UL's Transaction Security division. For your sales enquiries, please contact us at info@ul-ts.com, visit www.ul-ts.com, or contact one of our resellers.