



Collis Test Tools

Collis Card Image Editor

Who is it for?

Collis Card Image Editor is the perfect tool for card issuers that want to design a card image before personalizing physical test cards. Acquirers and Terminal Testers can benefit from Collis Card Image Editor when a specific physical card image is not available for testing.

Why do you need it?

The Collis Card Image Editor allows you to create card images dynamically without the need of real physical cards. Simply open a card image, make necessary adjustments, and save it.

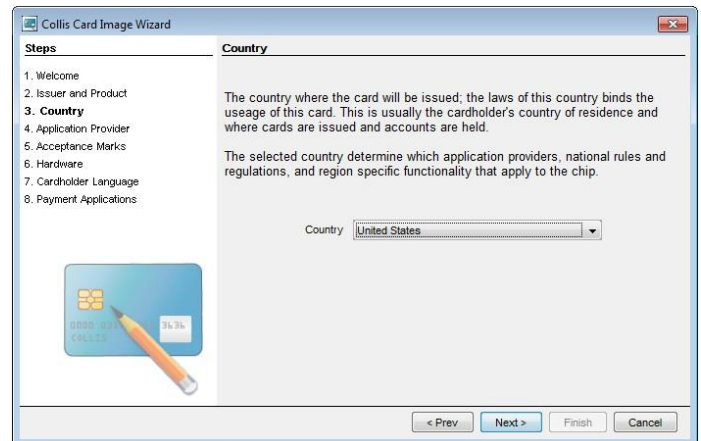
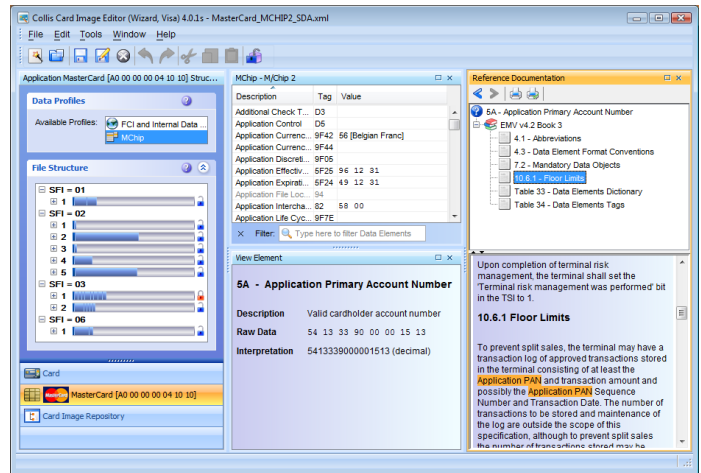
Card Issuers can design a card image before personalizing test cards and have it checked by Collis EMV Personalization Validation Tool.

Acquirers and Terminal Testers can combine it with the Collis Card Simulator and have the complete ability to use the saved card image as a simulated card for terminal testing.

What is inside?

Collis Card Image Editor provides you with three main functionalities:

- **Editor** – At the heart of the Collis Card Image Editor lies the ability to selectively edit individual data elements of any EMV card image, including extensive explanation of each data element.
- **Wizard** – The Wizard function allows you to produce a fully functional EMV compliant card image from scratch, in less than two minutes. It comprises all the knowledge and hands-on experience gained from many years of EMV experience by taking part in EMV and contactless migration projects.
- **File Map Editor** – The File Map Editor is a powerful functionality providing insight into the various areas of the card. You are able to navigate through the files stored on the card and edit them if necessary.



Key benefits

- Manage card profiles & images in an easy way
- Design and validate card image without the need for physical test cards
- A clear, efficient graphical user interface
- All EMV knowledge and help dynamically available
- Test terminals with card images that you define
- Speed up your testing process

Collis Card Image Editor

Specifications

Formats supported

- **EMV PVT XML**
for validation of EMV data in Collis EMV PVT
- **VPA XML**
popular format used by Visa Personalization Assistant
- **Collis Card Simulator XML**
for simulation of EMV cards with Collis Card Simulator e.g. used for testing terminals

Payment Schemes supported

- **EMV**
- **MasterCard:** Maestro, Cirrus, *PayPass*, SecureCode, *PayPass* MagStripe, M/Chip, *PayPass* M/Chip, CAP
- **Visa:** VSDC, VCPS, Electron, VPAY, Plus, payWave
- **American Express**
- **JCB**
- **Domestic schemes:** Interac, SPAN

Features

- Automatic cross referencing to EMV specifications
- Provides a variety of specific editors including:
 - CVM (Card Verification Method) editor
 - Track 1 and 2 editor
 - DOL (Data Object List) editor
- Supports single and multi-application card images
- Supports
 - Contact
 - Contactless
 - Dual interface card images

Technical Support

To ensure that you can effectively use the tool and gain the maximum benefits, UL offers for tools a Service Contract that gives you access to our Technical Support services. Our experienced technical team is available to provide support, advice and guidance.

The following services are covered

- New releases
- Helpdesk support
- Bug fixes
- Instant hardware replacement

You can access these services through the MyCollis service site at www.mycollis.com.

